



RELEASE NOTES

VERSION 1.6.0

DOCUMENT INFORMATION

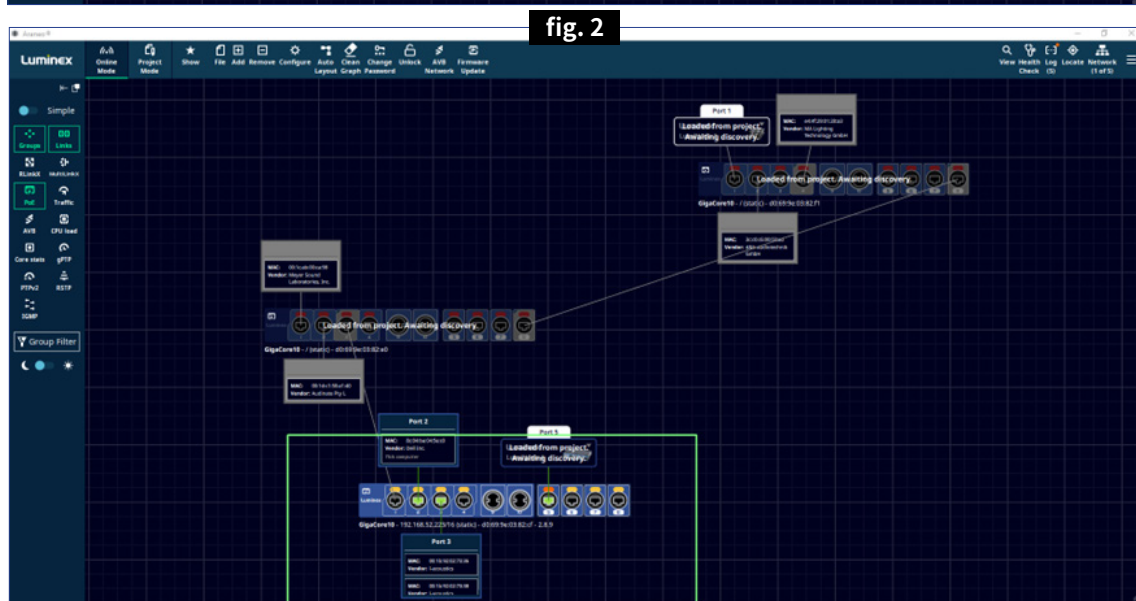
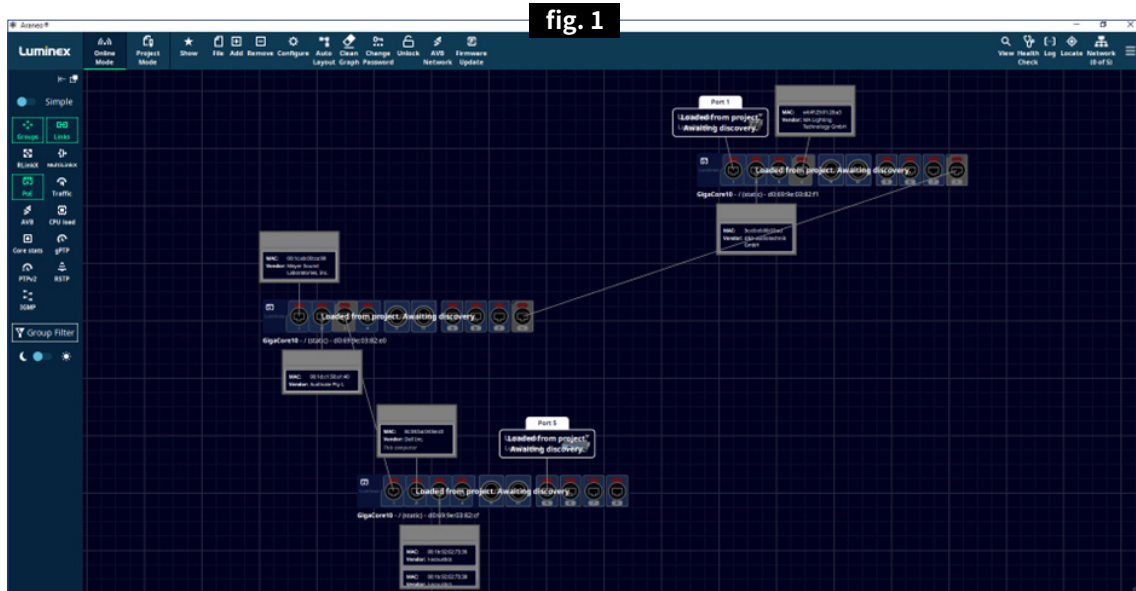
This release offers a number of new features and bug fixes.

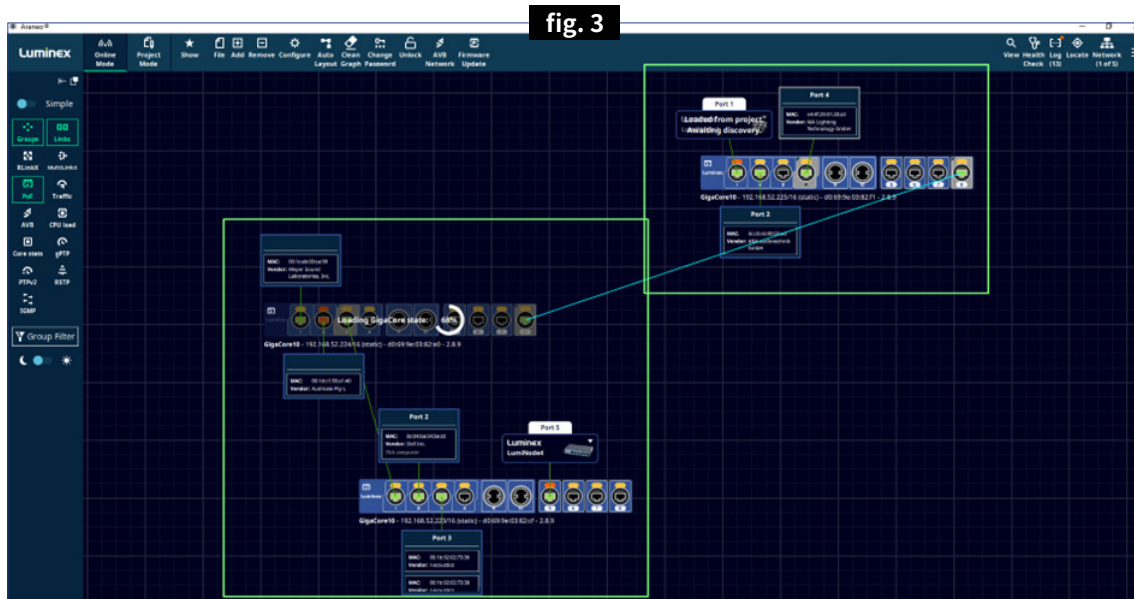
NEW

1 | NEW FEATURES: WORKFLOW

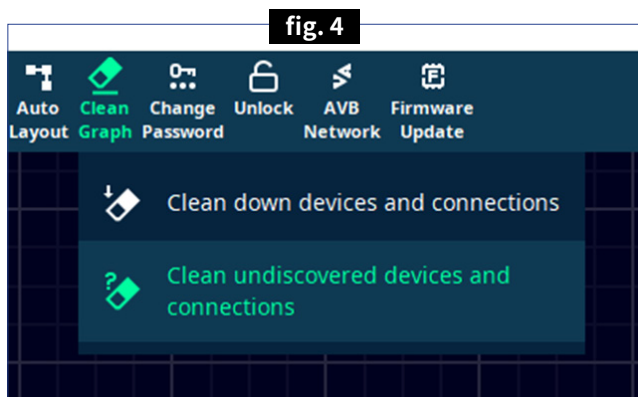
- **[Fig 1, Fig 2, Fig 3]** When loading a previously planned offline project and when monitoring the network in real time in online mode, devices (GigaCore switches and edge devices) that were planned for but are not yet on-line will now be shown on the canvas as undiscovered and as soon as they have been discovered gain an on-line status.

This allows users of a larger setups-in-progress, to use Araneo as a setup tool to see devices coming on-line as they are being built or connected, ensuring all devices appear as expected.

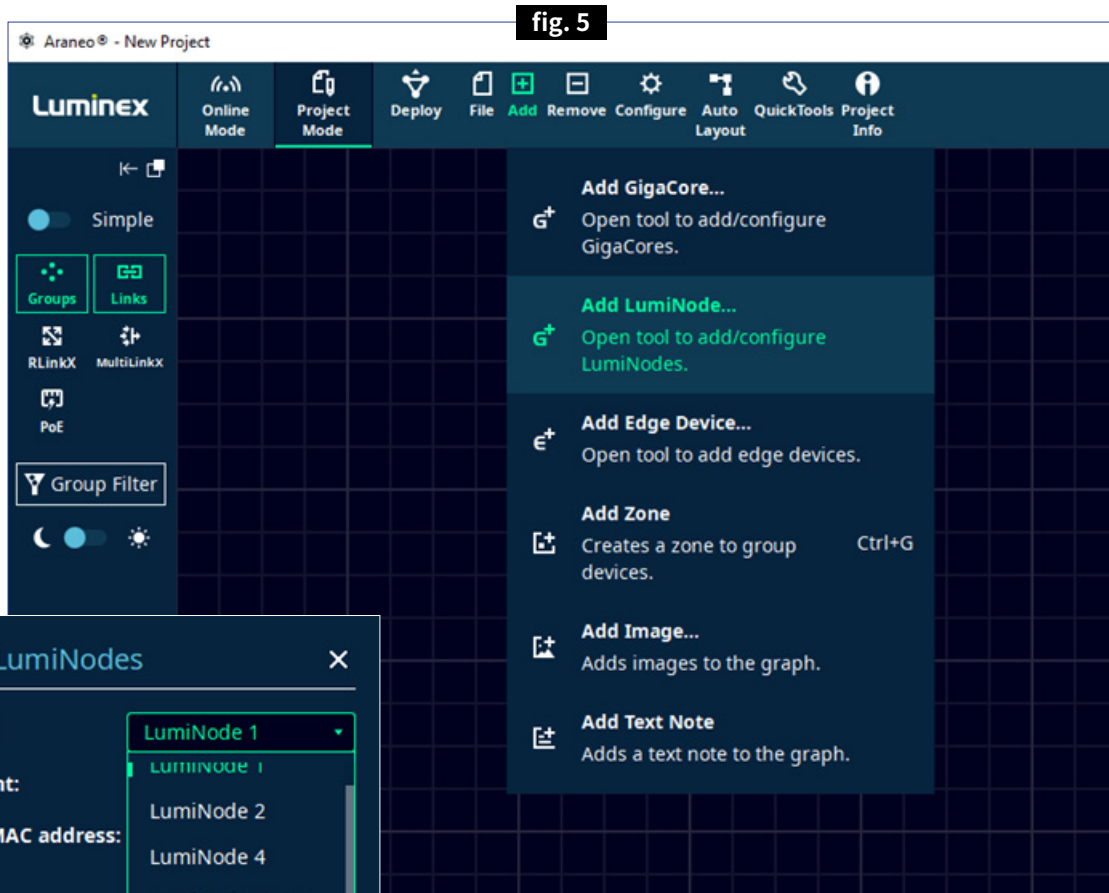




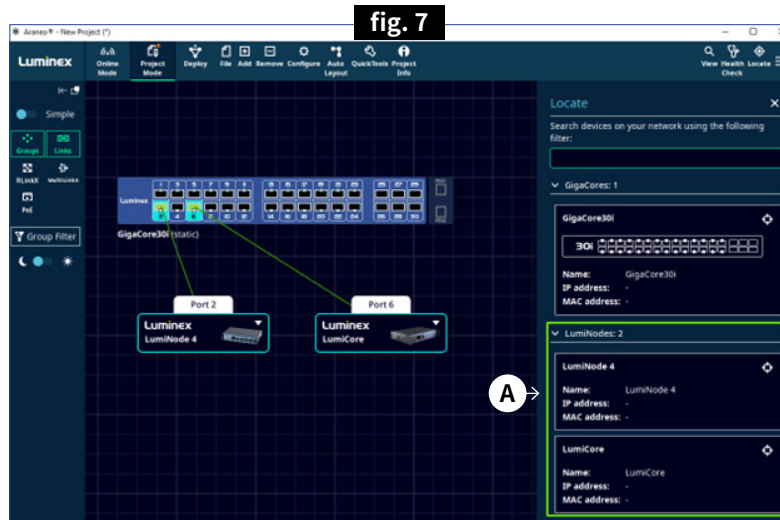
- **[Fig 4]** The above feature is combined with additional tools to clean the canvas and remove any unneeded and undiscovered devices.



- **[Fig 5, Fig 6]** The library of offline devices now includes all LumiNode and LumiCore versions so these can be imported in the project canvas as enriched edge devices to connect to GigaCore ports. Additionally, when saving an online topology as a project, LumiNodes and LumiCore's appearance as enriched edge devices is now retained.

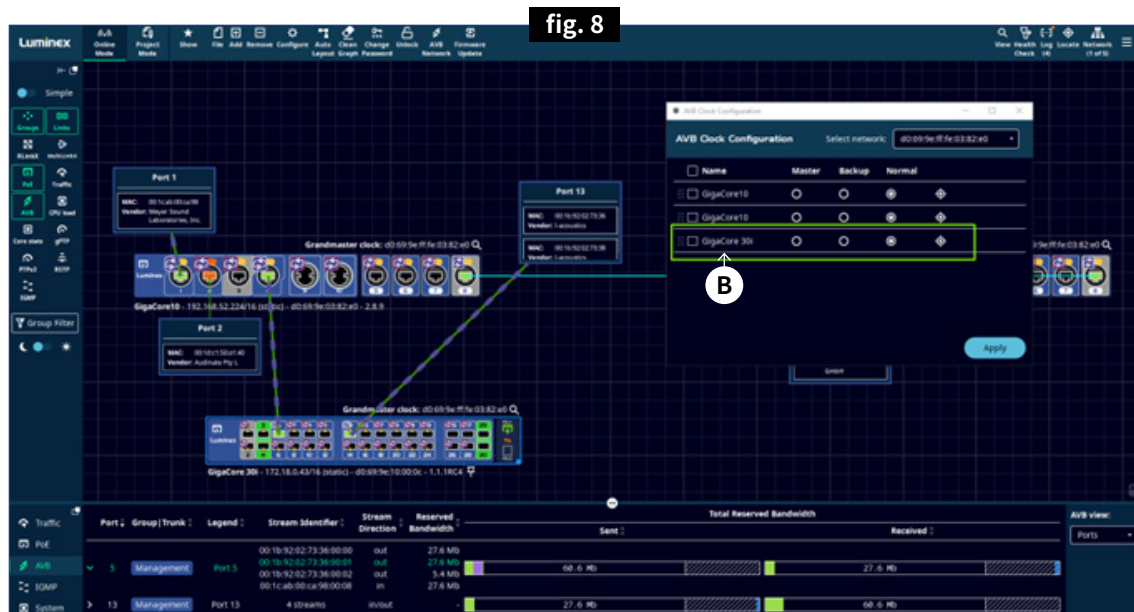


- **[Fig 7 - A]** The Locate tool in the project mode now includes LumiNode and LumiCore for easier navigation and improved workflow.



3 | NEW FEATURES: AVB CONFIGURATION SUPPORT FOR GIGACORE 30i

- **[Fig 8 - B]** AVB Clock configuration for GigaCore 30i has been added.



4 | NEW FEATURES: AVB CONFIGURATION SUPPORT FOR GIGACORE 30i

- **[Fig 9 - C]** Tick boxes have been added to enable/disable AVB per group for GigaCore 30i.
- **[Fig 10]** AVB network overview window now supports GigaCore 30i

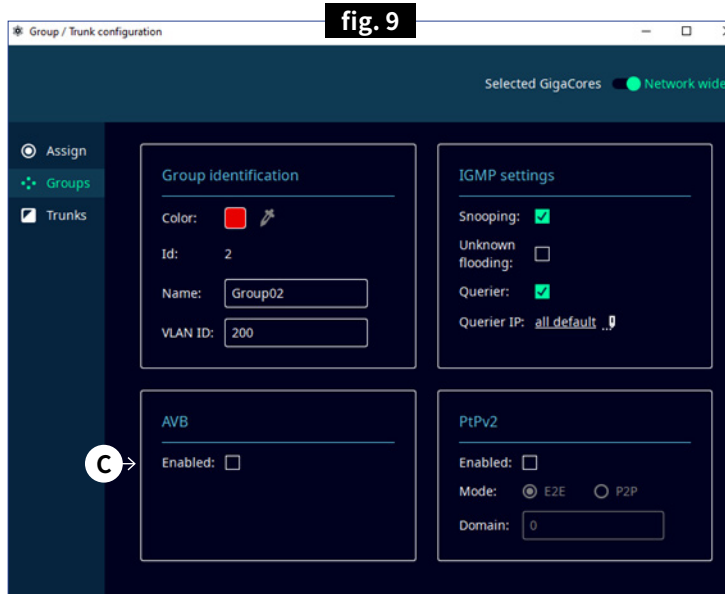


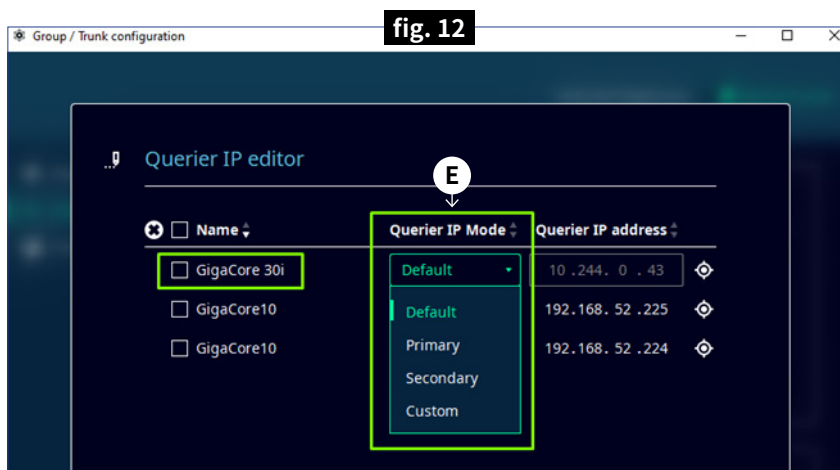
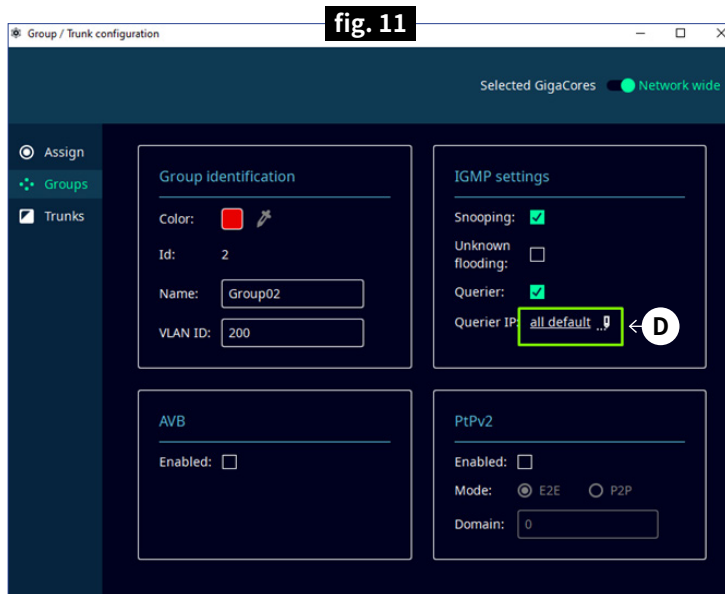
fig. 10

The screenshot shows the 'AVB Network' window. At the top, there is a 'Select network:' dropdown menu with the value 'd0:69:9e:ff:fe:03:82:e0'. Below this is a table with columns: 'Stream Identifier', 'Destination', 'Rank', 'Reserved Bandwidth', 'Name', 'Talker', 'Listeners', and 'Available Listener'. The table lists several entries for different stream identifiers and destinations, showing the participation of GigaCore 10 and GigaCore 30i.

Stream Identifier	Destination	Rank	Reserved Bandwidth	Name	Talker	Listeners	Available Listener
00:1b:92:02:73:36:00:00	91:e0:f0:00:0e:1f	Normal	27.6 Mb	GigaCore10	4	1, 8	-
				GigaCore10	8	2	-
				GigaCore 30i	13	5	-
00:1b:92:02:73:36:00:01	91:e0:f0:00:0e:20	Normal	27.6 Mb	GigaCore10	4	1	8
				GigaCore 30i	13	5	-
00:1b:92:02:73:36:00:02	91:e0:f0:00:0e:21	Normal	5.4 Mb	GigaCore10	4	1, 8	-
				GigaCore10	8	2	-
				GigaCore 30i	13	5	-
00:1c:ab:00:ca:98:00:08	91:e0:f0:00:a4:28	Normal	27.6 Mb	GigaCore10	1	4	8
				GigaCore 30i	5	13	-

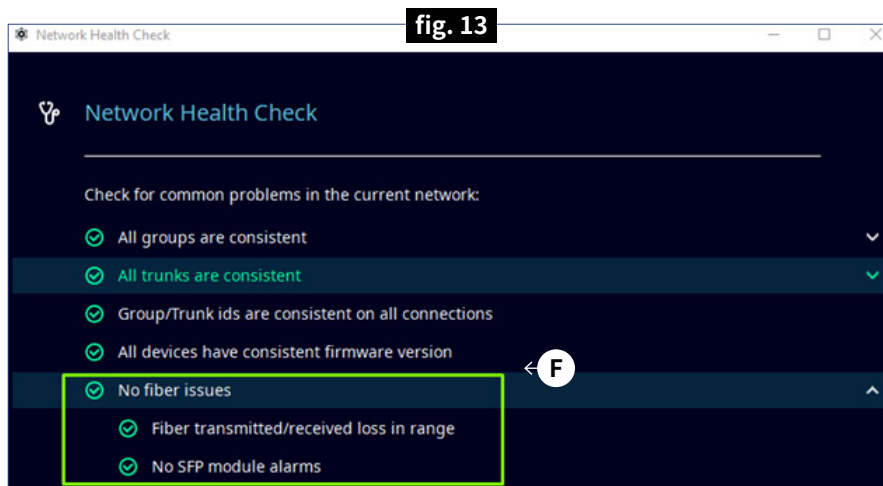
5 | NEW FEATURES: IGMP QUERIER SETTINGS FOR GIGACORE 30i

- [Fig 11 - D, Fig 12 - E] IGMP Querier settings for GigaCore 30i are now supported in specific dialog windows where the user has the following options for the IGMP Querier: the default IP address or a custom IP address or set the GigaCore 30i to be the primary or secondary Querier in a network.



6 | NEW FEATURES: PROACTIVE HEALTH CHECK FEATURE

- **[Fig 13 - F]** The proactive Health Check feature that performs consistency checks up front to guarantee settings are consistent across the entire network, has now been expanded with checks for fiber connections. By monitoring the differences between transmitted and received signal strength and warning the user when this difference is greater than 2dB so users can take proactive measures.
- Health Check also now reads out and reports any alarms generated by the SFP modules in use (Depending on the type and brand of the SFP module).
- A message will now be added to the Log when a PoE port goes over budget.



BUG / FIXES

- The selection of devices within a zone has been improved in online- and in project mode, and an issue was fixed where sometimes multiple selected devices would not be all selected / movable.
- A bug was fixed where the grid wouldn't always be displayed correctly on Windows OS.
- An issue was corrected where pinned zones would move when an auto layout was performed.
- When loading a layout, the edge devices are now displayed in the size they were saved in.
- A bug was fixed where the device description in the system info pane is displayed in a more user-friendly way with a pop up tooltip displaying long descriptions entirely.
- A bug was fixed where saving an online topology as a project file would not work if not all GigaCores were connected.
- Port selecting by mouse click has been improved for ports that have multiple connections.
- An issue was corrected that made devices in a zone jump erratically when trying to move them within this zone.

- A bug was fixed where the gPTP port indicator would not always display the correct info.
- A bug was fixed where sometimes ports would show an inconsistent colour scheme.
- PoE reserved power is now displayed more correctly.
- An issue was corrected where unknown flooding is now disabled (as per default) when a custom group was created.
- Consistent to GigaCore 30i Web UI, now in Araneo, the VLANID for custom groups exceeding 4093 is not prefilled anymore and is thus user configurable.
- A bug was fixed where the locate filter would still show devices that had been removed.